

## The best way to protect the extracurricular privileges of all students and schools is to be fully vaccinated!

Our school divisions require all students, and staff members to identify if they have been deemed a **“close contact”** by the SHA or other medical personnel.

SYMPTOMATIC: INDIVIDUAL IS SHOWING SIGNS OR SYMPTOMS OF COVID-19

ASYMPTOMATIC: INDIVIDUAL IS NOT SHOWING SIGNS OR SYMPTOMS OF COVID-19

A “FULLY VACCINATED” INDIVIDUAL IS ONE WHO HAS RECEIVED THE SECOND DOSE OF A TWO-DOSE COVID-19 IMMUNIZATION SERIES AND COMPLETED THE 14+ DAYS OF WAITING.

A “CLOSE CONTACT” MEANS THE INDIVIDUAL WAS WITHIN 2 METERS OR OCCUPIED THE SAME INDOOR SPACE FOR 15+ MINUTES, HAD DIRECT CONTACT WITH INFECTIOUS BODILY FLUIDS INCLUDING COUGH OR SNEEZE, OR SHARED DIRECT CARE OR PHYSICAL CONTACT WITH AN INDIVIDUAL WITH COVID-19.

### Scenario A:

Student A is deemed a close contact, is fully vaccinated and is asymptomatic. Student A shares evidence of vaccination to the Supervisor. The student will be **allowed to participate** in extracurricular activities. Student may attend school.

### Scenario B:

Student B is deemed a close contact, is fully vaccinated, is symptomatic and showing signs of COVID-19. The student will **not be allowed to participate** in extracurricular activities until symptoms cease for 48 hours or a negative test result is provided. Student should not be at school.

### Scenario C:

Student C is deemed a close contact and is not vaccinated. Regardless of symptomatic or asymptomatic, the student **cannot participate in extracurricular activities** until the 14-day isolation is complete and is not showing signs of COVID-19. Student may attend school.

### Scenario D:

Student D receives a positive test for COVID-19. The student **cannot participate in extracurricular activities** until the 10-day isolation is complete and is not showing signs of COVID-19, or has received direction from the SHA. Student should not be at school.

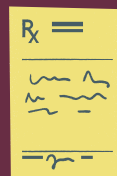
**IF AN INDIVIDUAL IS UNABLE OR DOES NOT WANT TO PROVIDE PROOF OF VACCINATION THEN THEY MUST BE TREATED AS IF THEY ARE NOT FULLY VACCINATED. ACCEPTED PROOF INCLUDES THE FOLLOWING:**  
STAFF MEMBERS DO NOT AND SHOULD NOT RETAIN A COPY OF VACCINATION PROOF.



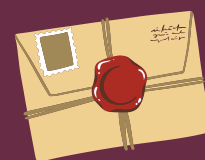
Copy of card shared at vaccination appointment



Copy of printout from MySaskHealth Record



Letter from Doctor or Pharmacist



Letter from Saskatchewan Health Authority